

# MarShaft



## MarCheck *plus*

UPGRADE TO MARCHECK *PLUS*: OPTIMALLY EQUIPPED  
FOR THE QUALITY ASSURANCE OF TOMORROW

- User-friendly, intuitive operating concept
- Future-proof with Windows 10 as operating system
- Easily retrofittable

This is what we mean by **EXACTLY.**

- 0 +



EXACTLY

# MARCHECK PLUS

## MORE FUNCTIONALITY AND FUTURE VIABILITY FOR YOUR MEASURING STATION

Upgrades pay off, if they deliver noticeably more productivity in a short time with as little effort as possible. This is why we have combined MarCheck *plus* control and evaluation intelligence to create a solution that significantly expands the application possibilities of existing measuring stations of the MarShaft MAN series. A change to MarCheck *plus* is not only worthwhile in terms of functionality, but also optimally equips your measuring station for the future with Windows 10 as the operating system.

### With real added value

MarCheck *plus* consists of a powerful, robust industrial panel PC with 15.6" touch screen and Windows 10 operating system. The supplied base simplifies retrofitting. Choose between a basic version with four measuring channels or a premium version with nine measuring channels. The pre-installed measuring and evaluation software MarWin EasyShaft MAN is intuitively designed. The combination of modern hardware and perfectly matched software creates the basis for comfortable working and future-oriented quality assurance.

### Your advantages with MarCheck *plus*

- Future-proof with Windows 10 as operating system (no more support for Windows 7 as of 2020)
- Modern evaluation software based on the cross-product MarWin platform
- Fully integrated evaluation software with teach-in function for easy creation of new measuring programs
- Spare parts supply guaranteed for at least ten years
- Particularly user-friendly: The robust panel PC designed for production can be operated 100% as a touchscreen or additionally with keyboard and mouse.

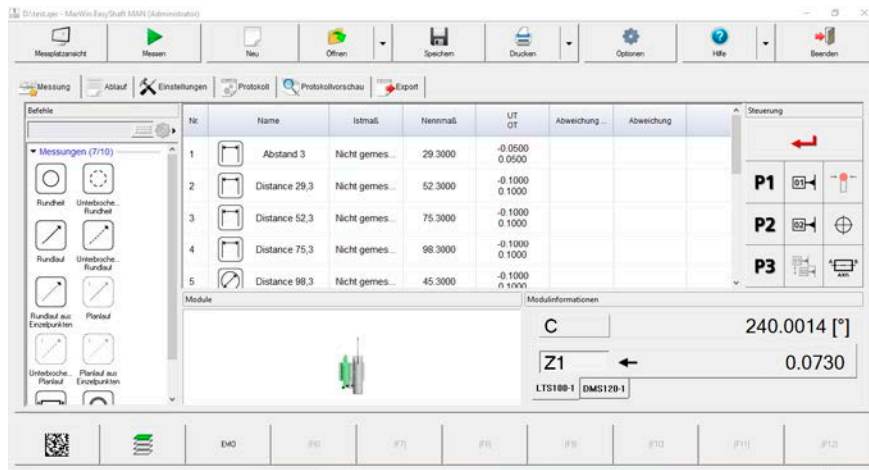
### Who should upgrade?

An upgrade to MarCheck *plus* is worthwhile for anyone operating a MarShaft MAN series measuring machine with an older generation evaluation computer, for example MarCheck II or HelioCheck II. Since Microsoft is discontinuing support for its Windows 7 operating system at the beginning of 2020, MarCheck *plus* ensures the future viability of your measuring station – and prevents security gaps. In addition, we can guarantee you the supply of spare parts supply for many years with an upgrade.



# MARWIN EASYSHAFT MAN

## MODERN MEASURING AND EVALUATION SOFTWARE FOR EASY OPERATION



The best basis for profitable work with MarCheck *plus* is the measuring and evaluation software MarWin EasyShaft MAN. The combination of first-class hardware and user-friendly software accelerates and simplifies your work. This gives you more flexibility and performance – and prepares your quality assurance for the future.

### Reach your objective faster and more easily

Users have it particularly easy: The software can be operated intuitively after a short familiarization period – no programming knowledge or time-consuming training courses required. New measuring programs can be quickly created during operation thanks to sophisticated teach-in functions: Measure individual features, then combine them into a measurement sequence and save them as a measuring program – that's all.

A further contribution to better usability: The convenient measuring program administration with clear window structure and quickly accessible function symbols. The barcode connection and the data export to statistical programs via QS-Stat and QS-Stat *plus* interface saves time – accompanied by a clearly structured preparation of the measurement protocols.

### Highlights of MarCheck *plus* and EasyShaft MAN:

- The data is read out fully automatically by MarCheck *plus*.
- The measuring modules can be combined as desired. The configuration is simple and can be carried out by any user.
- The system guarantees high measuring accuracy and reproducible measuring results.

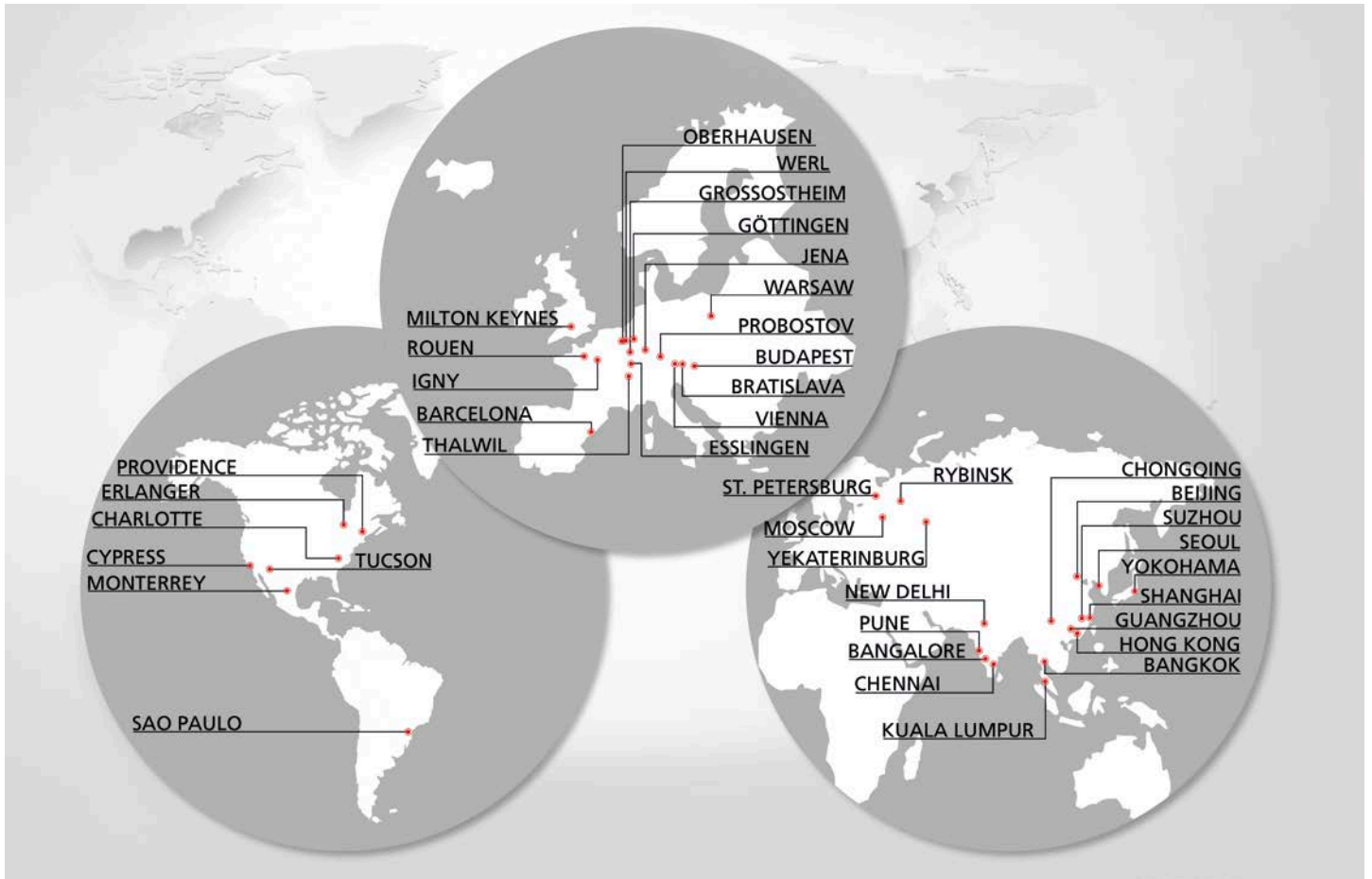
The EasyShaft MAN evaluation software can only be used with MarCheck *plus* – it cannot be implemented in older systems.

### Scope of delivery:

1. Industrial panel PC with 15.6" touchscreen monitor, powerful i5 processor, protection class IP54 and base
2. Control electronics with 4 measuring channels (alternatively 9 measuring channels possible)
3. Measuring software MarWin EasyShaft MAN

### Technical requirements for upgrade:

The upgrade to MarCheck *plus* is possible for tactile shaft measuring machines built from 2006 onwards, including the MarShaft MAN 400 to 2400 and Helio PAN II (with Mahr logo).



Partner of manufacturing companies worldwide.

**CLOSE** to our customers.

**Got QUESTIONS? Want more INFORMATION?**

Call us at +49 (0) 551 7073 800, or email us at [info@mahr.de](mailto:info@mahr.de)



- 0 +



**EXACTLY**

**Mahr GmbH**  
 Carl-Mahr-Straße 1, 37073 Goettingen, Germany  
 Reutlinger Str. 48, 73728 Esslingen, Germany  
 Phone +49 551 7073-800, Fax +49 551 7073-888  
[info@mahr.de](mailto:info@mahr.de), [www.mahr.de](http://www.mahr.de)



© Mahr GmbH  
 We reserve the right to make changes to our products, especially due to technical improvements and further developments. All illustrations and technical data are therefore without guarantee.  
 3760476 | 04.2019